

LABEL PRINTER CONTROL

with **GRANTEK**

CONSULT
DESIGN
DELIVER

Grantek's Label Printer Control Solution controls multiple vendor printers, laser code daters, print-and-apply labelers and other packaging marking equipment together from a modern, intuitive Ignition-based application screen. Grantek's LPC integrates with your conveyors, upstream equipment, reject systems and Grantek's Label Verification Solution to provide complete control of your packaging lines from one single common, modern interface.

WHY USE GRANTEK'S LABEL PRINTER CONTROL SOLUTION?

REDUCED RECALLS

Fewer operator activities at changeover or code date change

REDUCED DOWNTIME

Real-time status of printers with faults and consumable levels

VARYING PRINTING REQUIREMENTS

- GTIN/GS1
- New turnkey printers with automated label formats

OUR LABEL PRINTER CONTROL SOLUTION CAN PROVIDE:

PLC COMMUNICATIONS



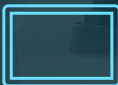
The system manages communication with the PLC allowing you to get SKU selection from the HMI and search for matching SKU in the database for confirmation.



DATABASE COMMUNICATION

This solution allows users to manage line information, along with SKU version and configuration information for each line. It can then connect this data communication with the PLC.

DEVICE COMMUNICATION



LPC can also facilitate communication with devices, by connecting scanners and printers to the system. This tool provides multi-vendor printer support.



COMMUNICATION STATUS

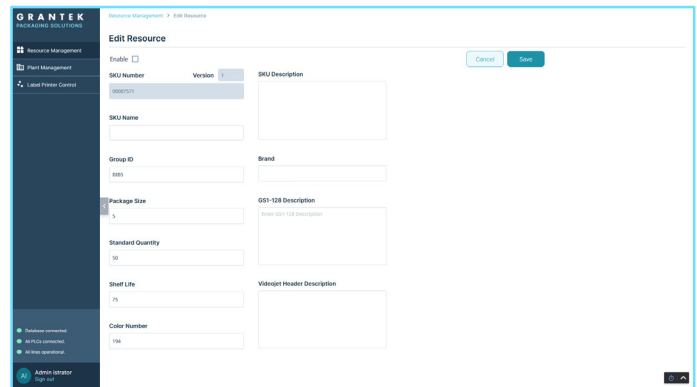
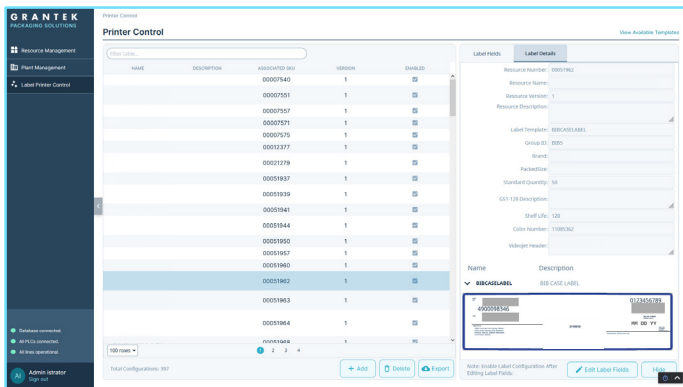
This solution allows you to send and receive watchdog notification from PLCs, send status requests to devices and display the communication status.

LABEL PRINTER CONTROL HOW IT WORKS

Granttek's Label Printer Control Solution involves PLC integration with the line and the barcode scanner for the detection of rejects. The barcode scanner is used to confirm the label and communicate with the PLC to stop the line and/or confirm that the line is running properly. Our Solution works on both existing or upgraded printers and can be incorporated into camera systems and upstream line equipment for integration with Label Verification, MES platforms/SKU servers, and line quality reviews.

Powered by **Ignition**
by redback automation

LINE CONTROL COMPONENTS



PRINTER CONTROL

On the plant floor, this screen shows SKU information including label details

EDIT RESOURCE

Resource management screen allows you to edit product line details

FUNCTIONALITIES

Centralized SKU management ensures that **only qualified users** set the best before dates, label text and other key quality information. Centralized display and notifications allow **rapid maintenance response** and a clear picture of packaging line operation. Single point changeover, allows verification equipment, multiple printer, code daters and even existing OEM upstream and downstream equipment to all be updated **from one interface**.

